

Location: \_\_\_\_\_

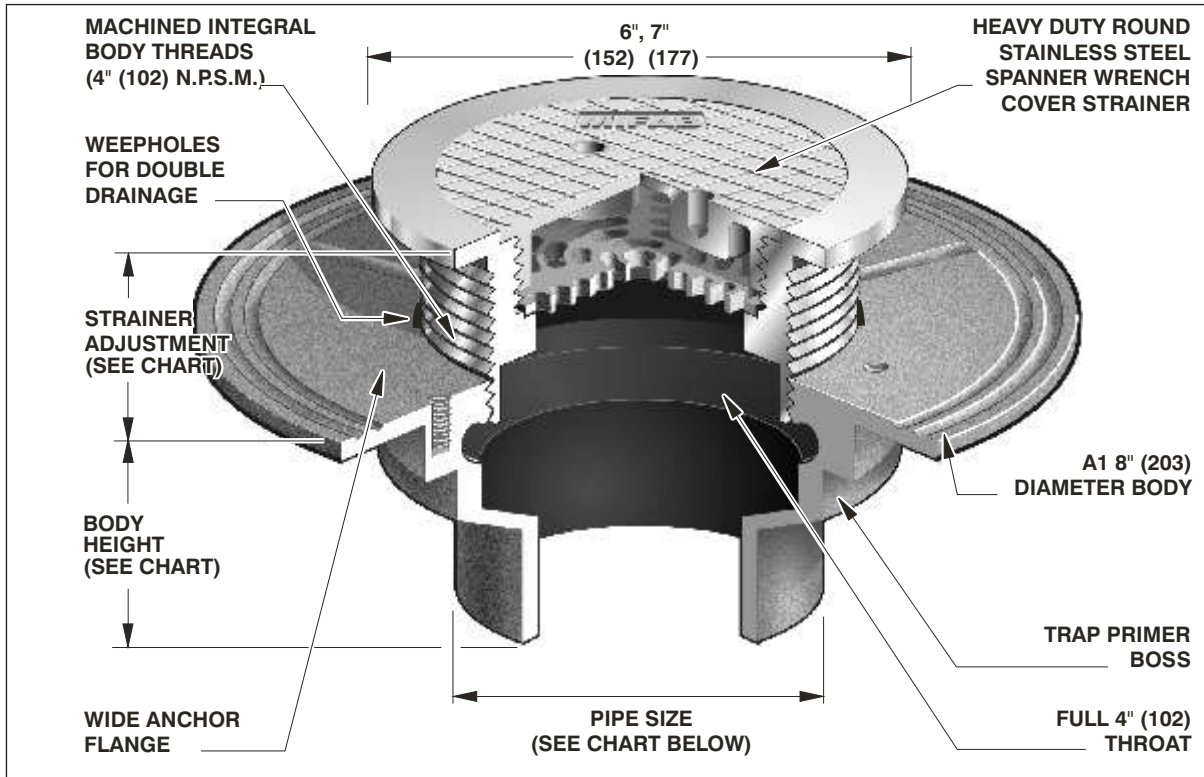


# F1100-T


## FLOOR DRAIN WITH STRAINER WRENCH COVER FOR NON-MEMBRANE FLOOR AREAS

**Specification:** MIFAB Series F1100-T(\*)-3 (\* specify strainer diameter) lacquered cast iron floor drain with anchor flange, weepholes, and heavy duty, solid, gas tight, spanner wrench, vandal proof, stainless steel cover for secure access. (For membrane floors, use MIFAB F1100-C-T Series.)


**Function:** Used in non-membrane finished areas where irregular drain use is required. Solid, gas tight, spanner wrench, vandal proof, stainless steel cover ensures secure access. Used for all types of poured finished floors.



**PARTS:**



A1 BODY



T(\*)-3  
(\*) Denotes Strainer Size  
(6" or 7" Diameter)

F1100-T Series meets ANSI-ASME floor drain standard A112.6.3-2001

STRAINER DIAMETER	STRAINER ADJUSTMENT		ANSI/ASME RATING		PIPE SIZE	BODY HEIGHT				
	MIN	MAX	FREE AREA	LOAD RATING S.S. (-3)		NO HUB (STANDARD)	PUSH ON (P)	THREADED (T)	INSIDE CAULK (X)	PVC/ABS (-30)/(-31)
6" (152)	11/16" (17)	1 1/2" (38)	9 in <sup>2</sup> (5800 <sup>2</sup> )	5000 to 7499 LBS.	2" (51)	3" (76)	3 3/8" (86)	2 1/4" (57)	3 3/4" (95)	2 15/16" (75)
7" (177)	9/16" (14)	1 9/16" (40)	12 in <sup>2</sup> (7700 <sup>2</sup> )	5000 to 7499 LBS.	3" (76)	3" (76)	3 3/8" (86)	2 5/8" (67)	3 3/4" (95)	3 3/4" (95)
					4" (102)	3" (76)	3 3/8" (86)	2 5/8" (67)	3 3/4" (95)	3 3/4" (95)
					5" (127)	3" (76)	—	2 5/8" (67)	3 3/4" (95)	—
					6" (152)	3 1/4" (83)	6 1/2" (165)	—	—	—

<b>SUFFIX</b>	<b>OPTIONAL VARIATIONS:</b>	<b>SUFFIX</b>		<b>SUFFIX</b>	
-3	Stainless steel strainer (standard)	-34	Closure plug	-C1	Clamp ring for low rough-in (min. 1/2" (13))
-5	Sediment bucket	-40	Underdeck clamp	-F4	4" Round funnel
-6	Security screws (T-20 Torx & pin)	-41	Sump receiver	-F6	6" Round funnel
-7	1/2" trap seal primer connection	-49	Chrome Plated Strainer Assembly	-G	Oval 4" x 9" funnel
-8	Backwater valve (2", 3", 4")	-90	Threaded side outlet (2", 3", 4") (cast iron only)	-J	6" x 3" x 1" funnel
-11	Acid resistant epoxy coated body	-90NH	No hub side outlet (2", 3", 4") (cast iron only)	(Standard)	No hub outlet
-12	Galvanized top assembly	-95	Client logo	P	Push on outlet
-13	Galvanized body	-ARRA	ARRA (Stimulus Act) compliant product	-PA	Pennsylvania Steel Act compliant product
-15	Extension	-BA	Buy American Act compliant product	T	Threaded outlet (2", 3", 4")
-21	Secondary flat stainless steel strainer (2", 3", 4")	-C	Membrane Clamp	X	Inside caulk outlet
-28	Stainless steel body (Type 304)			-Z	Extended wide elastomeric flange
-30	PVC socket connection body				
-31	ABS socket connection body				

Job Name: \_\_\_\_\_ Page No: \_\_\_\_\_  
 Section No: \_\_\_\_\_ Contractor: \_\_\_\_\_  
 Schedule No: \_\_\_\_\_ Purchase Order No: \_\_\_\_\_