

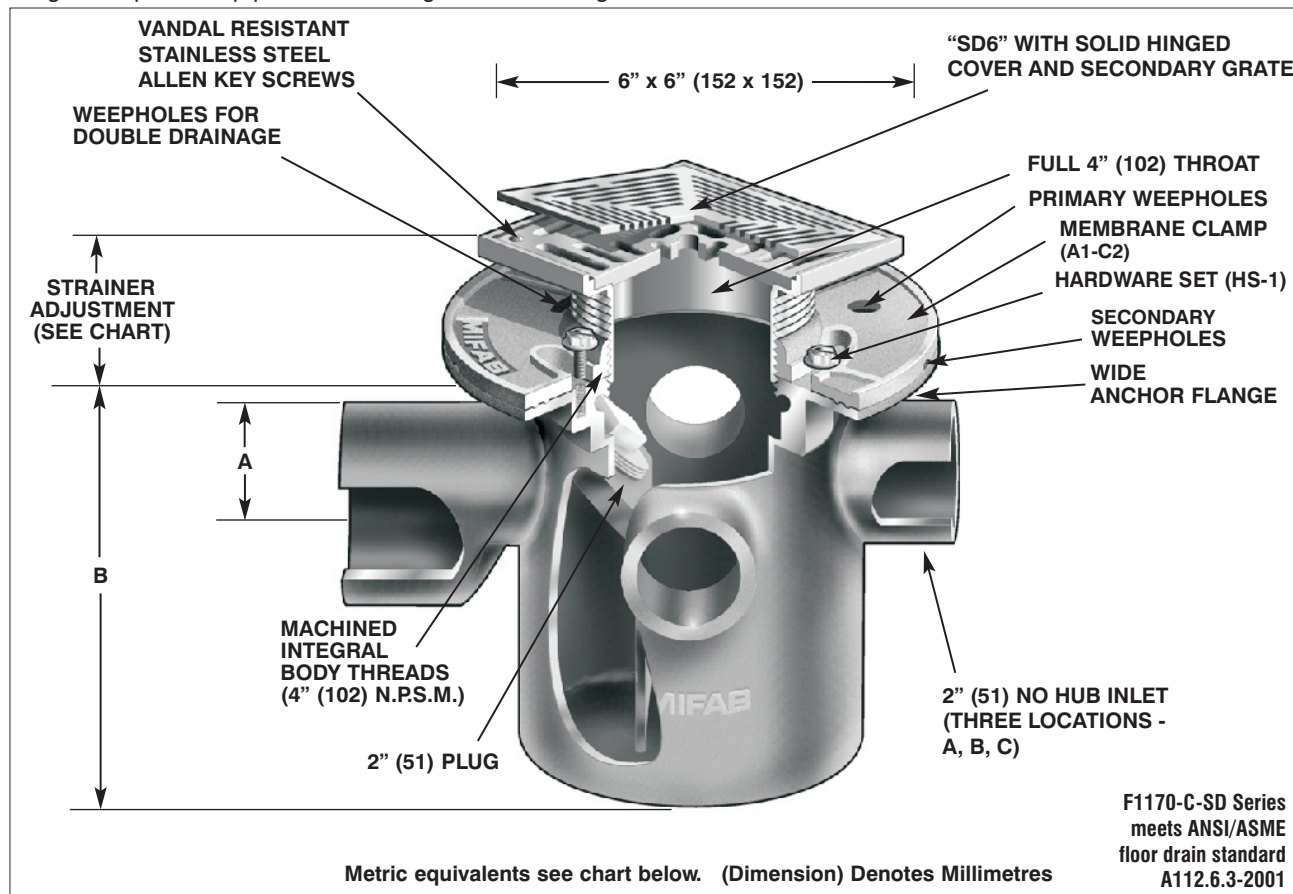
Location: _____

MIFAB® F1170-C-SD

FLOOR DRAIN WITH MULTI INLETS AND INTEGRAL TRAP AND SQUARE SOLID HINGED COVER FOR MEMBRANE FLOOR AREAS

Specification: MIFAB Series F1170-C-SD lacquered cast iron floor drain with integral trap, 2" (51) cleanout (rodding eye), anchor flange, cast iron membrane clamp ring with primary and secondary weepholes for waterproofing membrane, and adjustable "SD6" square 6" x 6" (152 x 152) with solid hinged cover and secondary grate. (Specify -44, 2" (51) no hub inlets as shown and required. Maximum three @ 90 degrees. Specify location -A, B, or C.)

Function: Used in toilets, kitchens and other membrane finished areas where additional inlets are required to receive drainage. Integral deep seal trap prevents sewer gas from entering area.



STRAINER DIAMETER	STRAINER ADJUSTMENT		ANSI/ASME RATING		PIPE SIZE	BODY DIMENSIONS		
	MIN	MAX	FREE AREA	LOAD RATING N.B. (-1) S.S. (-3)		A	B	
6" x 6" (152 x 152)	2" (51)	3 1/8" (79)	12 in ² (7700 ²)	UP TO 2,000 LBS.	5000-7499 LBS.	3" (76) 4" (102)	3 3/4" (95)	7 7/8" (200)
							3 3/4" (95)	7 7/8" (200)

SUFFIX OPTIONAL VARIATIONS:

- 1 Nickel bronze strainer
- 3 Stainless steel strainer
- 5 Sediment bucket
- 6 Security screws (T-20 Torx & pin)
- 7 1/2" trap seal primer connection
- 8 Backwater valve (2", 3", 4")
- 11 Acid resistant epoxy coated body
- 13 Galvanized body
- 15 Extension

SUFFIX

- 34 Closure plug
- 44 2" (51) no hub inlet (specify A, B, C locations)
- 49 Chrome Plated Strainer
- 95 Client logo
- ARRA ARRA (Stimulus Act) compliant product
- BA Buy American Act compliant product

SUFFIX

- C1 Clamp ring for low rough-in (min. 1/2" (13))
- HP Heel proof grate (1/4" maximum grate opening size, -3 only)
- PA Pennsylvania Steel Act compliant product
- Z Extended wide elastomeric flange

Job Name: _____ Page No: _____
 Section No: _____ Contractor: _____
 Schedule No: _____ Purchase Order No: _____

MIFAB reserves the right to make changes in material and design without formal notice and obligation.