

Location: \_\_\_\_\_



# MC-31D

## BACK TO BACK SINGLE HANGER PLATE CARRIER WITH TWO UPRIGHTS

**Specification:** MIFAB® Series MC-31D back to back, lavatory hanger plate carrier with universal, adjustable, top support plates. Complete with lacquered 2" x 1" x 1/8" thick structural steel uprights with 3" x 4 1/2" welded steel feet and mounting hardware.

**Function:** Used to support back to back wall-hung fixtures such as urinals and water coolers that are independent of the wall. Designed for use in conjunction with the fixture hanger plate supplied by the fixture manufacturer.

**CUTOUT FOR FIXTURE WITH BACK SUPPLY**

**SINGLE UNIVERSAL PLATE ASSEMBLY, SECURED TO UPRIGHTS WITH "U" BOLTS TO PROVIDE EASE OF ROUGH-IN HEIGHT ADJUSTMENT**

**(1/4"-20 x 8" ALL THREADED PLATED RODS (6 PIECES) W / HARDWARE**

**EXTRA HEAVY RECTANGULAR STEEL STRUCTURAL UPRIGHTS (2" x 1" x 1/8" Wall Thickness)**

**HEAVY DUTY WELDED FEET THAT FIT WITHIN STANDARD STUD WALL CONSTRUCTION**

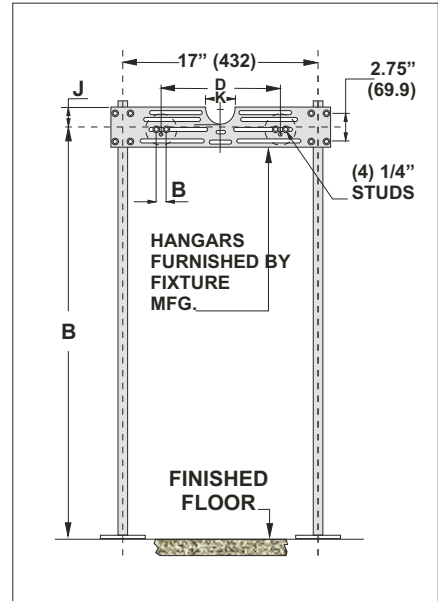
42"

3"

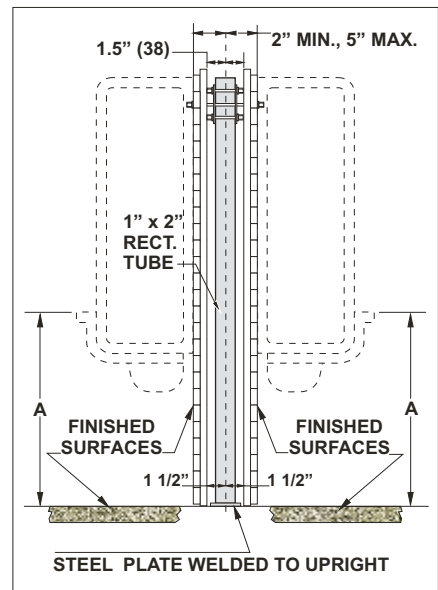
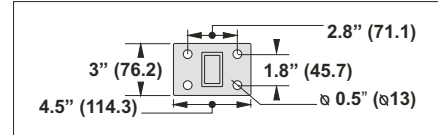
4 1/2"

MC-31D Series  
Meets ANSI/ASME  
fixture carrier standard  
A112.6.1M-97

**NOTE: FOOT SUPPORTS SHOULD BE SECURELY ANCHORED TO FLOOR WITH 1/2" (13) BOLTS AND ANCHORS BY OTHERS**



### BASE DETAIL



**Note:** See the various fixture dimensional rough-in guides on the [www.mifab.com](http://www.mifab.com) website.

**SUFFIX OPTIONAL VARIATIONS:**

- A Stud length over 8" (specify)
- B Floor to ceiling uprights
- BA Buy American Act compliant product

**SUFFIX**

- HDH Heavy duty hanger
- PA Pennsylvania Steel Act compliant product
- PFAB Prefabricated carrier
- 20 Flush valve support

Job Name: _____	Page No: _____
Section No: _____	Contractor: _____
Schedule No: _____	Purchase Order No: _____