

Location: \_\_\_\_\_

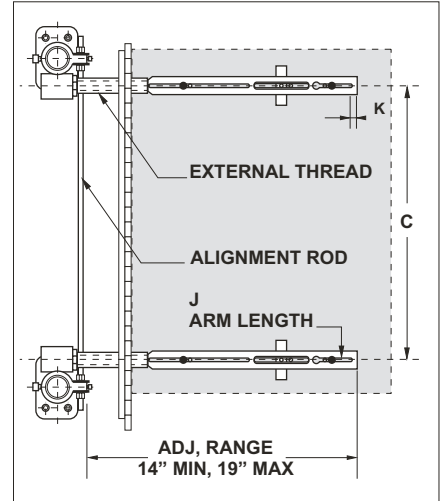
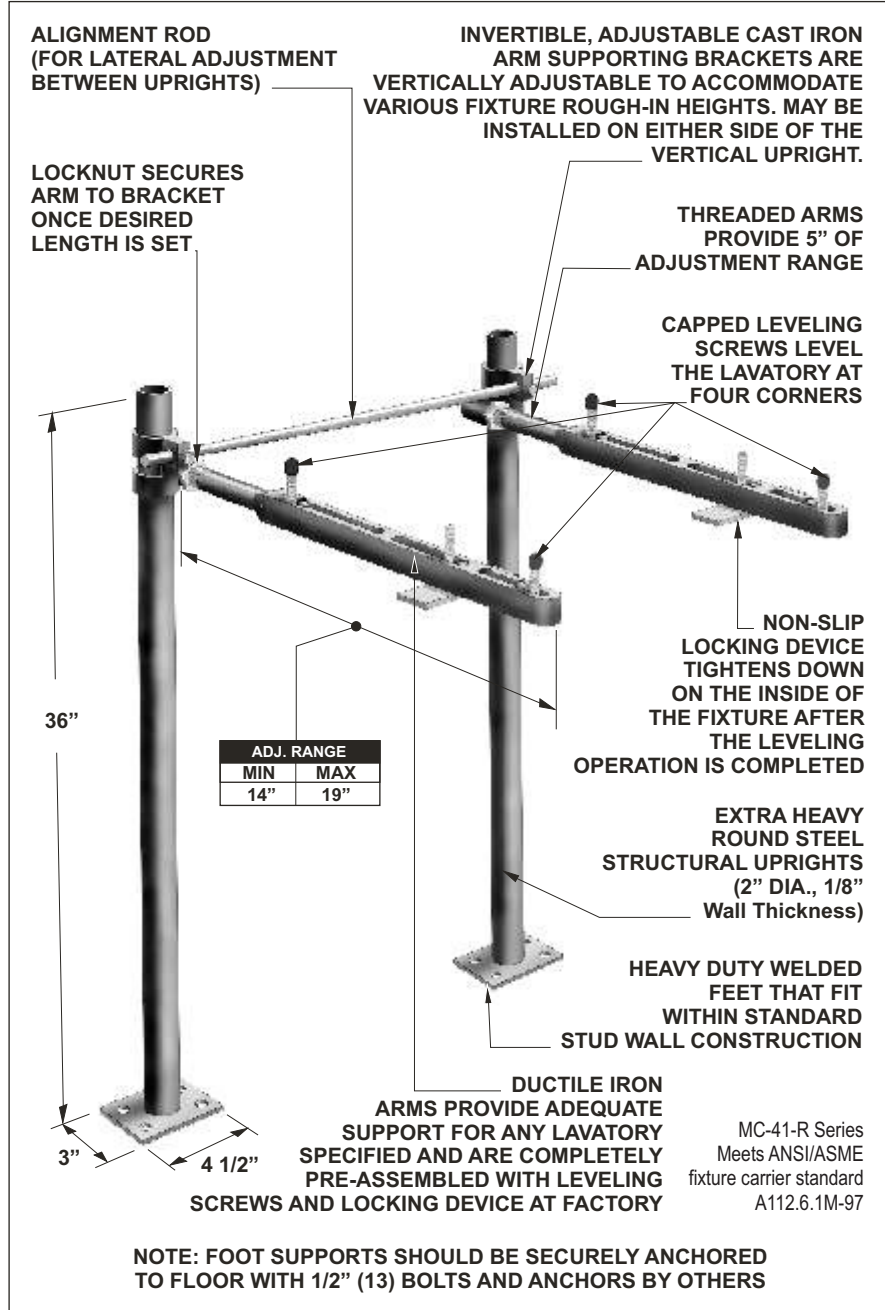


# MC-41-R

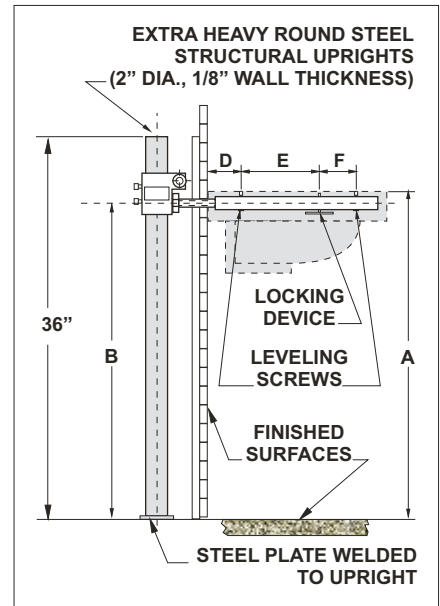
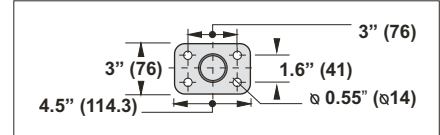
## FIXTURE CARRIER WITH CONCEALED ARMS AND ROUND UPRIGHTS

**Specification:** MIFAB® Series MC-41-R floor mounted concealed arm lavatory carrier with lacquered, adjustable, ductile iron concealed support arms. Complete with lacquered cast iron invertible and adjustable arm supporting brackets, alignment rod, two lacquered 2" diameter x 1/8" thick structural steel uprights with 3" x 4 1/2" welded steel feet and fixture leveling and locking hardware.

**Function:** Used to support off-the-floor fixtures so that the vertical load bearing components are concealed within the wall. The fixture carrier has no contact with the finished floor inside of the room. The round uprights allow for lateral adjustment to the arms.



**BASE DETAIL**



**Note:** See the various fixture dimensional rough-in guides on the [www.mifab.com](http://www.mifab.com) website.

**SUFFIX OPTIONAL VARIATIONS:**

- B Floor to ceiling uprights (specify height required)
- BA Buy American Act compliant product
- E2 2" chrome plated escutcheons (pair)
- G Wall support valve plate
- PA Pennsylvania Steel Act compliant product

**SUFFIX**

- PFAB Prefabricated carrier
- see MC-42-R Paraplegic Rough-in
- see MC-41D-R Back to back system
- 32 Foot pedal mounting plate
- 88 Mounting hardware for cast iron wall hung lavs

Job Name: \_\_\_\_\_ Page No: \_\_\_\_\_

Section No: \_\_\_\_\_ Contractor: \_\_\_\_\_

Schedule No: \_\_\_\_\_ Purchase Order No: \_\_\_\_\_