

Location: \_\_\_\_\_

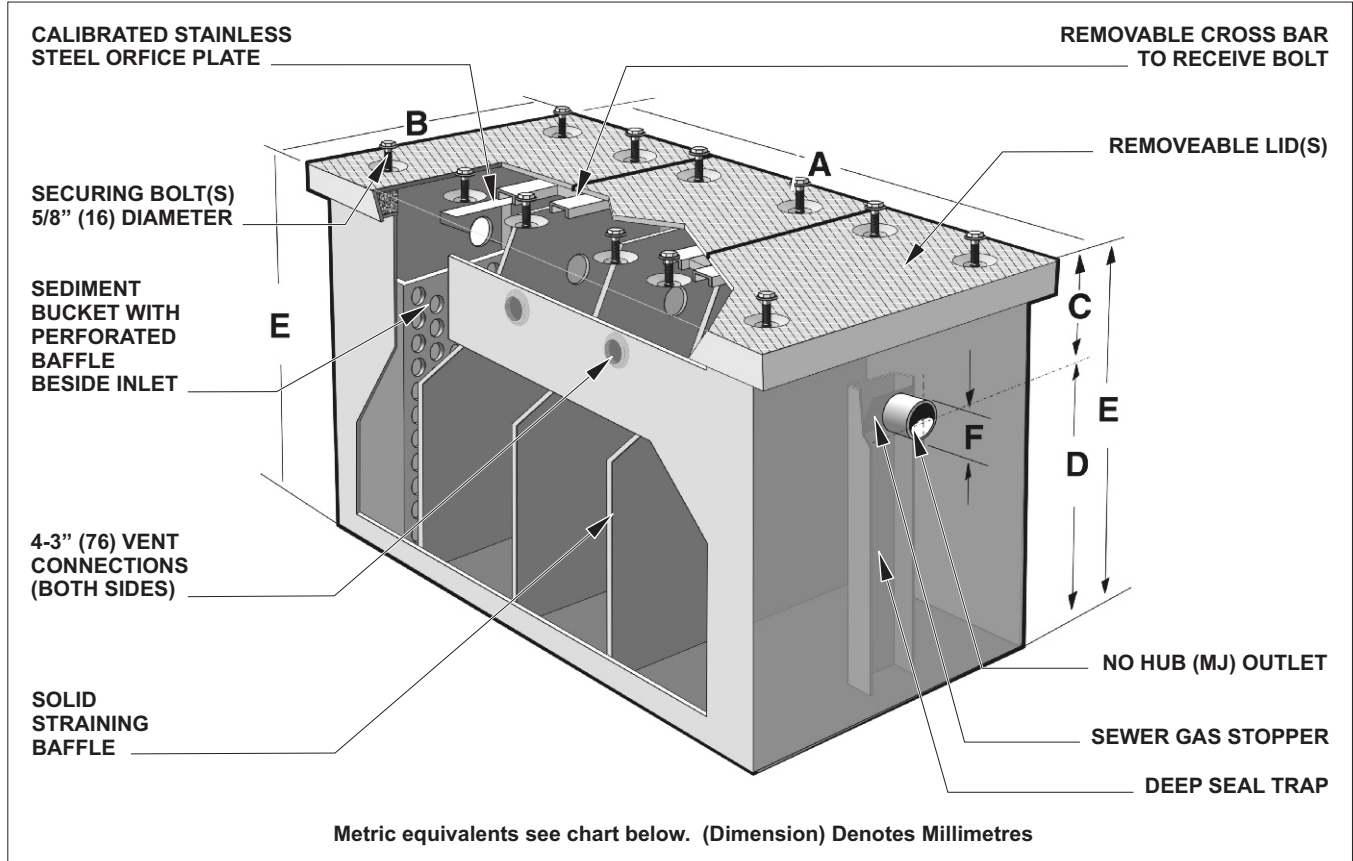


# MI-SAND

## SAND INTERCEPTOR

**Specification:** MIFAB® Series MI-SAND \_\_\_ sanitary epoxy coated inside and outside fabricated 10 gauge steel sand interceptor. Unit shall include: removable cross bar, four 3" (76) threaded vent connections, solid straining baffles, stainless steel calibrated orifice plate, securing bolt(s), sediment bucket with perforated baffle beside inlet, deep seal trap, sewer gas stopper, internal air relief by-pass, and steel powder epoxy coated non skid rectangular gasketed lid(s).

**Function:** Used in maintenance facilities to receive wastewater that contains sand and sediment. Sediment and debris is collected inside of the internal sediment bucket. The solid baffle system enhances the separation process as sand and sediment settle within each chamber during the flow of water through the interceptor. Regular maintenance is required to keep the interceptor functioning. Interceptor may be installed on the ground, semi recessed or flush with the floor. Sewer gas stopper prevents foul odors from entering the area through the interceptor.



Metric equivalents see chart below. (Dimension) Denotes Millimetres

**Note:** The "C" dimension detailed above is from either the middle of the inlet or the outlet to the top the interceptor. The inlet and outlet dimensions are always the same.

MODEL NO.	A	B	C	D	E	F	LIQUID HOLDING CAPACITY		NO. OF LIDS	NO. OF BOLTS	SHIPPING WEIGHT (lbs.)	WEIGHT WHEN FILLED WITH WATER (lbs.)
							U.S.G.	CU.FT.				
MI-SAND-1	60" (1524)	36" (914)	22" (559)	38" (965)	60" (1524)	4" (102)	323	43	3	12	1020	3588
MI-SAND-2	72" (1829)	36" (914)	22" (559)	38" (965)	60" (1524)	4" (102)	405	54	3	12	1100	4199
MI-SAND-3	96" (2438)	36" (914)	22" (559)	38" (965)	60" (1524)	6" (152)	540	72	4	16	1310	5472
MI-SAND-4	108" (2743)	36" (914)	22" (559)	38" (965)	60" (1524)	6" (152)	608	81	5	20	1400	6093
MI-SAND-5	120" (3048)	36" (914)	22" (559)	38" (965)	60" (1524)	6" (152)	700	93	5	20	1575	6799
MI-SAND-6	144" (3658)	36" (914)	22" (559)	38" (965)	60" (1524)	8" (204)	810	108	6	24	1770	8057
MI-SAND-7	180" (4572)	36" (914)	22" (559)	38" (965)	60" (1524)	8" (204)	1013	135	8	32	1900	9781

**Note:** Reduce the "A" and "B" dimensions by 1" (25) to determine the actual body length and width dimensions. The lid overhangs the body by 1/2" (13) on all four sides.

<b>SUFFIX</b>	<b>OPTIONAL VARIATIONS:</b>	<b>SUFFIX</b>	<b>SUFFIX</b>	
-AL	Aluminum lid(s)	-FL	Anchor flange	
-AP	Anode pack	-FLM	Anchor flange and membrane clamp	
-BA	Buy American Act compliant product	-HD	Heavy duty reinforced lid(s)	
-C	Extension "C" as required	-H-20	H-20 traffic rated lid	
			-SS	Stainless steel interceptor
			-T	F.I.P. female threaded inlet and outlet
			-TL	Lid(s) to receive tile or terrazzo
			specify	Special size inlet and outlet

Job Name: \_\_\_\_\_ Page No: \_\_\_\_\_  
 Section No: \_\_\_\_\_ Contractor: \_\_\_\_\_  
 Schedule No: \_\_\_\_\_ Purchase Order No: \_\_\_\_\_

MIFAB reserves the right to make changes in material and design without formal notice and obligation.